

MAIN FIGURE DATA					
SIDES Metres	ANGLES OF DIRECTION	CO-ORDINATES System: WGS84			
		Constants Y 0.00 X +2 800 000.00 Y Metres X			
A B	903.04	315 48 20	A	+55 745.35	+58 110.59
B C	148.74	225 48 10	B	+55 116.85	+59 758.17
C D	365.73	315 48 10	C	+55 010.22	+58 654.48
D E	525.04	45 48 00	D	+54 741.32	+59 931.03
E F	120.75	315 15 30	E	+55 117.73	+59 237.07
F G	408.28	61 56 30	F	+55 034.25	+59 384.32
G H	25.53	168 30 20	G	+55 394.55	+59 576.35
H J	2170.41	65 30 45	H	+55 400.51	+59 551.53
J K	293.90	148 47 10	J	+57 375.69	+60 451.15
K L	99.59	235 14 00	K	+57 528.00	+60 199.79
L M	320.05	135 24 20	L	+57 445.19	+60 143.00
M A	2638.14	225 50 43	M	+57 670.90	+59 815.10

INDICATORY DATA					
S GA	62.55	241 56 30	GA	+55 339.35	+59 545.94
H HA	22.23	64 30 45	HA	+55 420.74	+59 560.75

TRIGONOMETRICAL BEACONS			
A 312	+59 858.13		+60 272.34
Pre 51			
A 315	+58 079.32		+60 150.89
Pre 63			

S.G. No.	2515/2007
SHEET 1 OF 16 SHEETS	
APPROVED	
<i>Indi Bekeman</i>	
for SURVEYOR-GENERAL	
03. 07. 2007	

DESCRIPTION OF BEACONS (Main figure):
A, B, C, D, F, J, K, L, M, N, 15mm Iron peg
E, Iron Standard
G, H, Not beacons
P, 20mm Iron peg
248, 254, 269, Hole in rock
All other beacons 15mm Iron peg

- SERVITUDE NOTES:**
- The figure L s4 s5 s6 L represents a Right of Way Servitude and affects portion 669 as indicated
Vide Diagram S.G. No. A8465/1987 Deed of
 - The line s1 s2 represents the centre line of a Power Line Servitude and affects portion 669 as indicated
Vide Diagram S.G. No. A4880/1978 Deed of Servitude No. K2915/1979s
 - The line s7 s8 s3 represents the centre line of a Power Line Servitude and affects portion 668 as indicated
Vide Diagram S.G. No. A4873/1978 Deed of Servitude No. K2915/1979s
 - The figure s10 s11 s12 s13 s14 s15 s16 s17 s18 s19 s20 s21 s22 s23 s24 s25 s26 s27 s28 s29 s30 s31 s32 s33 s34 s35 s36 s37 s38 s39 s40 s41 s42 s43 s44 s45 s46 s47 s48 s49 s50 s51 s52 s53 s54 s55 s56 s57 s58 s59 s60 s61 s62 s63 s64 s65 s66 s67 s68 s69 s70 s71 s72 s73 s74 s75 s76 s77 s78 s79 s80 s81 s82 s83 s84 s85 s86 s87 s88 s89 s90 s91 s92 s93 s94 s95 s96 s97 s98 s99 s100 s101 s102 s103 s104 s105 s106 s107 s108 s109 s110 s111 s112 s113 s114 s115 s116 s117 s118 s119 s120 s121 s122 s123 s124 s125 s126 s127 s128 s129 s130 s131 s132 s133 s134 s135 s136 s137 s138 s139 s140 s141 s142 s143 s144 s145 s146 s147 s148 s149 s150 s151 s152 s153 s154 s155 s156 s157 s158 s159 s160 s161 s162 s163 s164 s165 s166 s167 s168 s169 s170 s171 s172 s173 s174 s175 s176 s177 s178 s179 s180 s181 s182 s183 s184 s185 s186 s187 s188 s189 s190 s191 s192 s193 s194 s195 s196 s197 s198 s199 s200 s201 s202 s203 s204 s205 s206 s207 s208 s209 s210 s211 s212 s213 s214 s215 s216 s217 s218 s219 s220 s221 s222 s223 s224 s225 s226 s227 s228 s229 s230 s231 s232 s233 s234 s235 s236 s237 s238 s239 s240 s241 s242 s243 s244 s245 s246 s247 s248 s249 s250 s251 s252 s253 s254 s255 s256 s257 s258 s259 s260 s261 s262 s263 s264 s265 s266 s267 s268 s269 s270 s271 s272 s273 s274 s275 s276 s277 s278 s279 s280 s281 s282 s283 s284 s285 s286 s287 s288 s289 s290 s291 s292 s293 s294 s295 s296 s297 s298 s299 s300 s301 s302 s303 s304 s305 s306 s307 s308 s309 s310 s311 s312 s313 s314 s315 s316 s317 s318 s319 s320 s321 s322 s323 s324 s325 s326 s327 s328 s329 s330 s331 s332 s333 s334 s335 s336 s337 s338 s339 s340 s341 s342 s343 s344 s345 s346 s347 s348 s349 s350 s351 s352 s353 s354 s355 s356 s357 s358 s359 s360 s361 s362 s363 s364 s365 s366 s367 s368 s369 s370 s371 s372 s373 s374 s375 s376 s377 s378 s379 s380 s381 s382 s383 s384 s385 s386 s387 s388 s389 s390 s391 s392 s393 s394 s395 s396 s397 s398 s399 s400 s401 s402 s403 s404 s405 s406 s407 s408 s409 s410 s411 s412 s413 s414 s415 s416 s417 s418 s419 s420 s421 s422 s423 s424 s425 s426 s427 s428 s429 s430 s431 s432 s433 s434 s435 s436 s437 s438 s439 s440 s441 s442 s443 s444 s445 s446 s447 s448 s449 s450 s451 s452 s453 s454 s455 s456 s457 s458 s459 s460 s461 s462 s463 s464 s465 s466 s467 s468 s469 s470 s471 s472 s473 s474 s475 s476 s477 s478 s479 s480 s481 s482 s483 s484 s485 s486 s487 s488 s489 s490 s491 s492 s493 s494 s495 s496 s497 s498 s499 s500 s501 s502 s503 s504 s505 s506 s507 s508 s509 s510 s511 s512 s513 s514 s515 s516 s517 s518 s519 s520 s521 s522 s523 s524 s525 s526 s527 s528 s529 s530 s531 s532 s533 s534 s535 s536 s537 s538 s539 s540 s541 s542 s543 s544 s545 s546 s547 s548 s549 s550 s551 s552 s553 s554 s555 s556 s557 s558 s559 s560 s561 s562 s563 s564 s565 s566 s567 s568 s569 s570 s571 s572 s573 s574 s575 s576 s577 s578 s579 s580 s581 s582 s583 s584 s585 s586 s587 s588 s589 s590 s591 s592 s593 s594 s595 s596 s597 s598 s599 s600 s601 s602 s603 s604 s605 s606 s607 s608 s609 s610 s611 s612 s613 s614 s615 s616 s617 s618 s619 s620 s621 s622 s623 s624 s625 s626 s627 s628 s629 s630 s631 s632 s633 s634 s635 s636 s637 s638 s639 s640 s641 s642 s643 s644 s645 s646 s647 s648 s649 s650 s651 s652 s653 s654 s655 s656 s657 s658 s659 s660 s661 s662 s663 s664 s665 s666 s667 s668 s669 s670 s671 s672 s673 s674 s675 s676 s677 s678 s679 s680 s681 s682 s683 s684 s685 s686 s687 s688 s689 s690 s691 s692 s693 s694 s695 s696 s697 s698 s699 s700 s701 s702 s703 s704 s705 s706 s707 s708 s709 s710 s711 s712 s713 s714 s715 s716 s717 s718 s719 s720 s721 s722 s723 s724 s725 s726 s727 s728 s729 s730 s731 s732 s733 s734 s735 s736 s737 s738 s739 s740 s741 s742 s743 s744 s745 s746 s747 s748 s749 s750 s751 s752 s753 s754 s755 s756 s757 s758 s759 s760 s761 s762 s763 s764 s765 s766 s767 s768 s769 s770 s771 s772 s773 s774 s775 s776 s777 s778 s779 s780 s781 s782 s783 s784 s785 s786 s787 s788 s789 s790 s791 s792 s793 s794 s795 s796 s797 s798 s799 s800 s801 s802 s803 s804 s805 s806 s807 s808 s809 s810 s811 s812 s813 s814 s815 s816 s817 s818 s819 s820 s821 s822 s823 s824 s825 s826 s827 s828 s829 s830 s831 s832 s833 s834 s835 s836 s837 s838 s839 s840 s841 s842 s843 s844 s845 s846 s847 s848 s849 s850 s851 s852 s853 s854 s855 s856 s857 s858 s859 s860 s861 s862 s863 s864 s865 s866 s867 s868 s869 s870 s871 s872 s873 s874 s875 s876 s877 s878 s879 s880 s881 s882 s883 s884 s885 s886 s887 s888 s889 s890 s891 s892 s893 s894 s895 s896 s897 s898 s899 s900 s901 s902 s903 s904 s905 s906 s907 s908 s909 s910 s911 s912 s913 s914 s915 s916 s917 s918 s919 s920 s921 s922 s923 s924 s925 s926 s927 s928 s929 s930 s931 s932 s933 s934 s935 s936 s937 s938 s939 s940 s941 s942 s943 s944 s945 s946 s947 s948 s949 s950 s951 s952 s953 s954 s955 s956 s957 s958 s959 s960 s961 s962 s963 s964 s965 s966 s967 s968 s969 s970 s971 s972 s973 s974 s975 s976 s977 s978 s979 s980 s981 s982 s983 s984 s985 s986 s987 s988 s989 s990 s991 s992 s993 s994 s995 s996 s997 s998 s999 s1000
 - The line s2 s20 s12 s7 represents the centre line of a Power Line Servitude and affects portion 663, 668 and 669 as indicated
Vide S.R. No. 588/1978 Deed of Servitude No.
 - The line s21 s22 represents the centre line of a Power Line Servitude and affects portion 668 as indicated
Vide Diagram S.G. No. A6300/1975 Deed of Servitude No. K1732/1978s

GENERAL PLAN
OF PORTION 337 OF THE FARM
BOSCHKOP NO. 369 - JR
COMPRISING 333 PORTIONS NUMBERED 338 TO 670

DIAGRAM: S.G. No. 2514/2007
DEED OF TRANSFER No.
PROVINCE : GAUTENG

SURVEYED IN SEPTEMBER 2004 TO JANUARY 2007 BY ME

[Signature]
H.D. MALHERBE (PLS 1139)
PROFESSIONAL LAND SURVEYOR

FILE No.	-/52
SURVEY RECORDS No. 893/2005	
COMPILATION: JRSS-13, 14, 31	
DEEDS: PRETORIA	

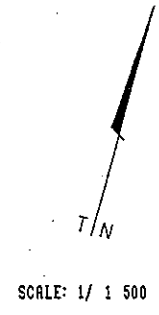
Table with 12 columns of CO-ORDINATES (System: WGS84) and 3 columns of AREAS (Partion Number, Square metres). Rows 376 to 526.

GENERAL PLAN OF PORTIONS 338 TO 670 (PORTIONS OF PORTION 237) OF THE FARM BOSCHKOP No. 368 - JR SURVEYED IN SEPTEMBER 2004 TO JANUARY 2007 BY ME W D MALHERBE (PLS 1138) PROFESSIONAL LAND SURVEYOR

FILE No. -/52 SURVEY RECORDS No. 992/2007 COMPILATION: URSS - 13, 14, 31 DEEDS: PRETORIA

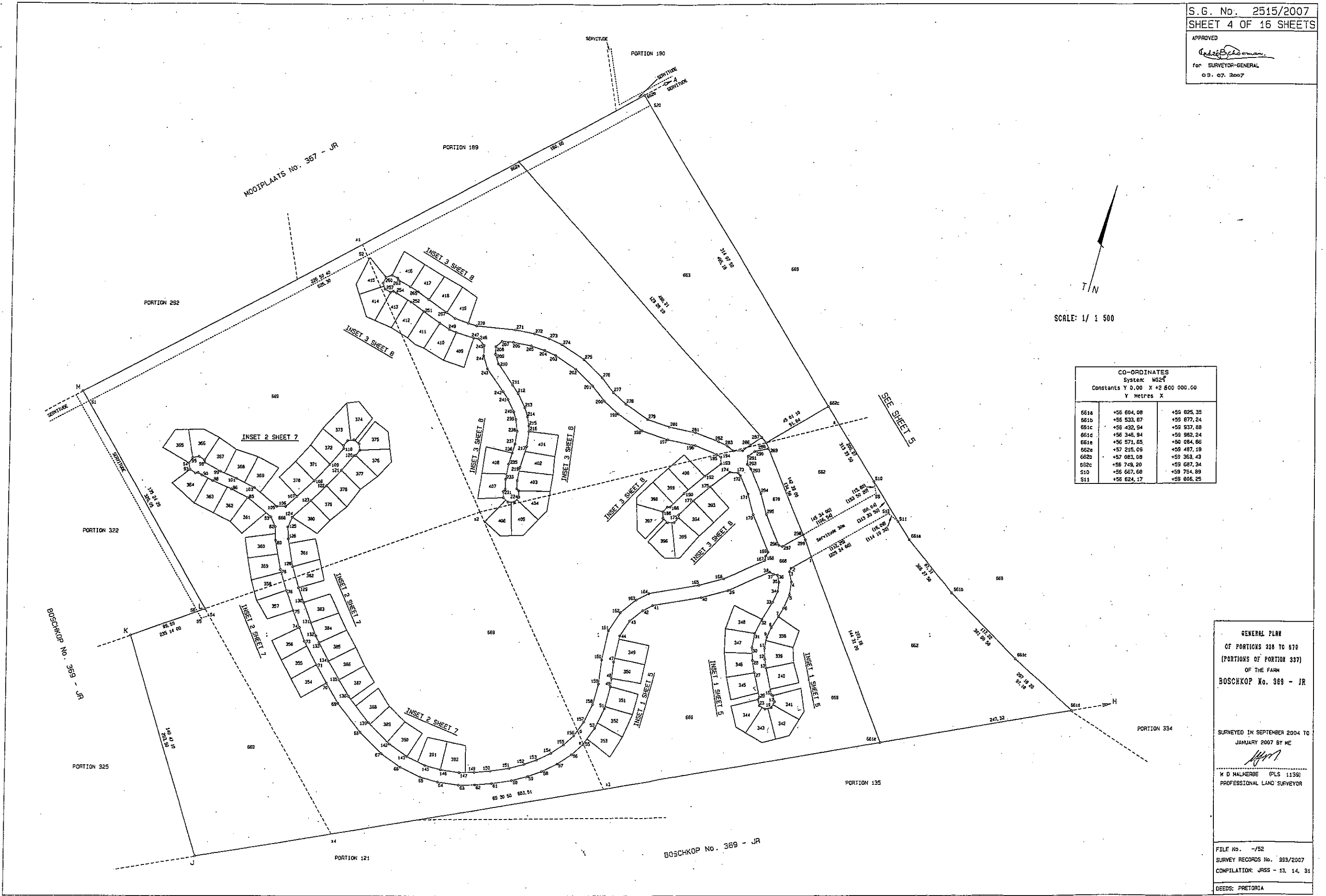
S.G. No. 2515/2007
SHEET 4 OF 16 SHEETS

APPROVED
[Signature]
for SURVEYOR-GENERAL
03.07.2007



CO-ORDINATES
System: WGS84
Constants Y 0.00 X +2 600 000.00
Y Metres X


661a	+56 604,08	+59 825,35
661b	+56 533,87	+59 877,24
661c	+56 432,94	+59 937,88
661d	+56 346,94	+59 982,24
661e	+56 271,85	+60 024,86
662a	+57 215,09	+59 487,19
662b	+57 083,08	+59 358,43
662c	+56 748,20	+59 287,34
610	+56 667,68	+59 784,89
611	+56 624,17	+59 806,25



GENERAL PLAN
OF PORTIONS 338 TO 370
(PORTIONS OF PORTION 337)
OF THE FARM
BOSCHKOP No. 369 - JR

SURVEYED IN SEPTEMBER 2004 TO
JANUARY 2007 BY ME
[Signature]
M D MALHERBE (PLS 1139)
PROFESSIONAL LAND SURVEYOR

FILE No. -/52
SURVEY RECORDS No. 993/2007
COMPILATION: JRSS - 13, 14, 31
DEEDS: PRETORIA

S.G. No. 2515/2007
 SHEET 5 OF 16 SHEETS
 APPROVED

 for SURVEYOR-GENERAL
 03-07-2007

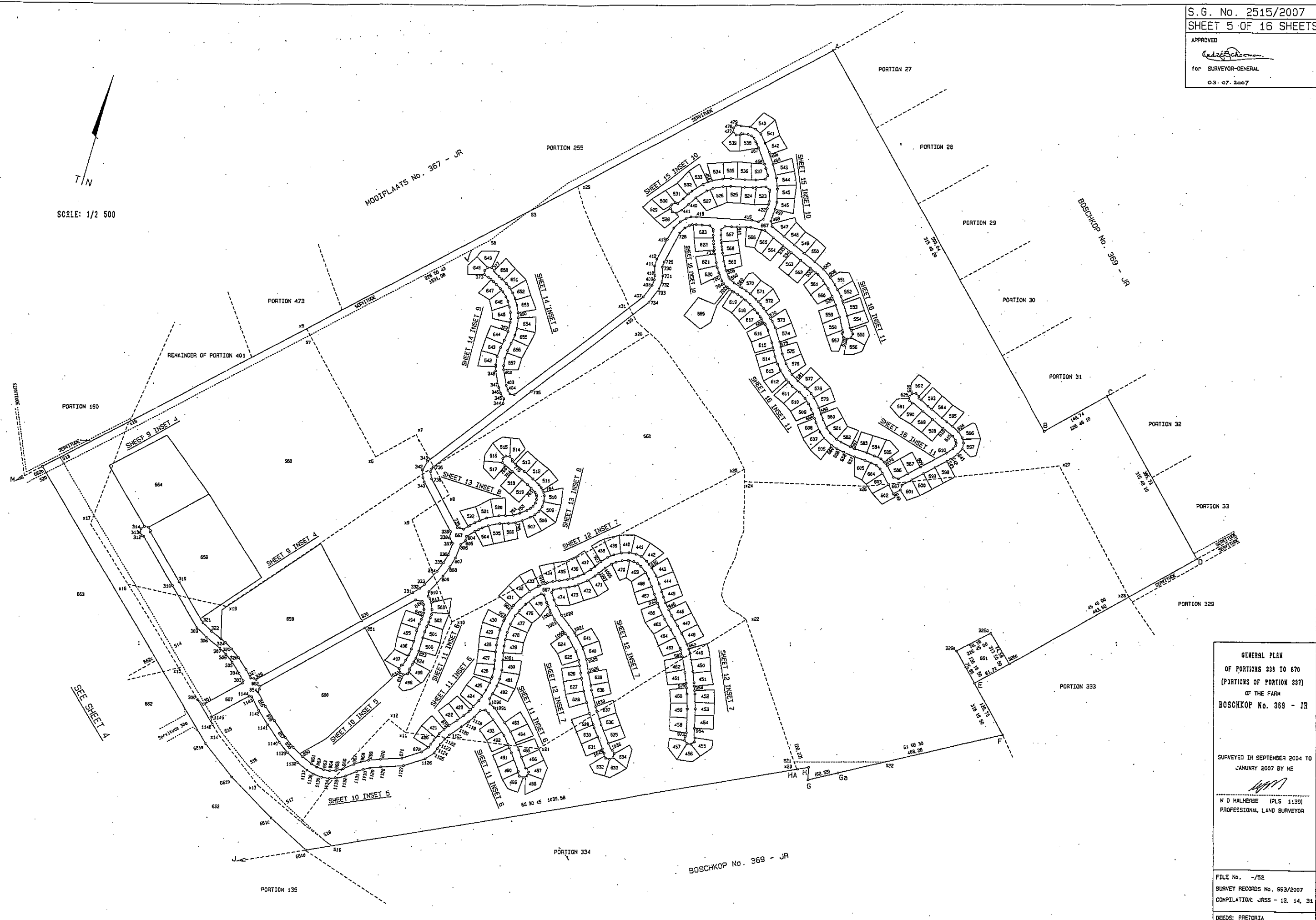


SCALE: 1/2 500

MOOIPLAATS No. 367 - JR

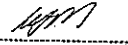
BOSCHKOP No. 369 - JR

BOSCHKOP No. 369 - JR

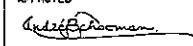


GENERAL PLAN
 OF PORTIONS 331 TO 670
 (PORTIONS OF PORTION 337)
 OF THE FARM
 BOSCHKOP No. 369 - JR

SURVEYED IN SEPTEMBER 2004 TO
 JANUARY 2007 BY ME


 N D MALHERBE (PLS 1139)
 PROFESSIONAL LAND SURVEYOR

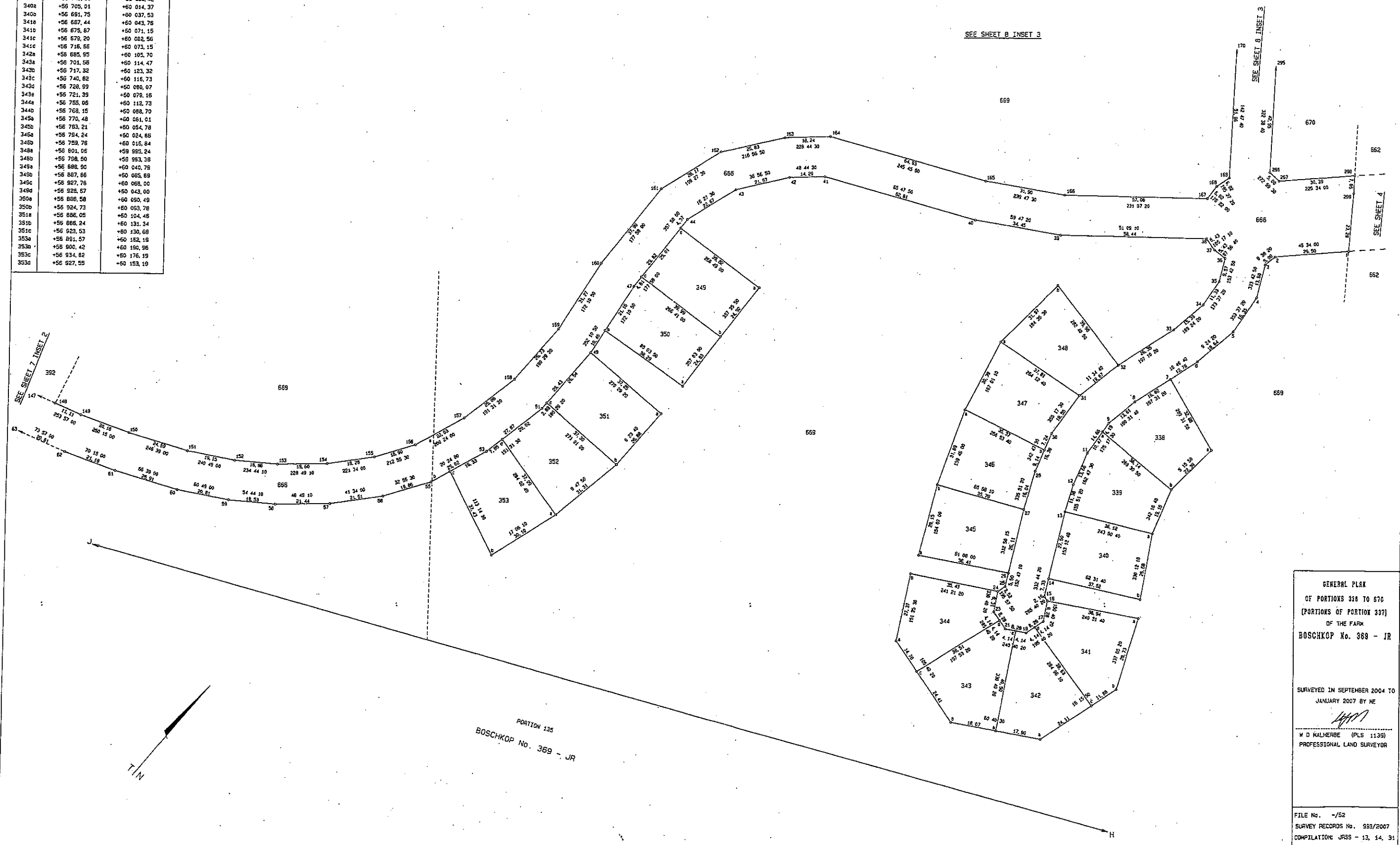
FILE No. -/52
 SURVEY RECORDS No. 993/2007
 COMPILATION: JRSS - 13, 14, 31
 DEEDS: PRETORIA

S.G. No. 2515/2007
 SHEET 6 OF 16 SHEETS
 APPROVED

 for SURVEYOR-GENERAL
 03-07-2007

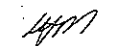
INSET 1

SCALE: 1/500

CO-ORDINATES		
System: WGS84		
Constants Y 0.00 X +2 000 000.00		
Y Metres	X	
338a	+56 708,79	+59 973,82
338b	+56 710,84	+59 998,12
339a	+56 746,98	+59 996,42
340a	+56 705,01	+60 014,97
340b	+56 691,75	+60 037,53
341a	+56 687,44	+60 043,76
341b	+56 675,87	+60 071,15
341c	+56 679,20	+60 082,56
341d	+56 716,56	+60 073,15
342a	+56 685,95	+60 105,70
342b	+56 701,56	+60 114,47
343a	+56 717,32	+60 123,32
343b	+56 740,82	+60 116,73
343c	+56 728,99	+60 080,07
344a	+56 721,33	+60 079,16
344b	+56 755,06	+60 112,73
344c	+56 768,15	+60 082,70
345a	+56 770,48	+60 061,01
345b	+56 783,21	+60 054,78
345c	+56 784,24	+60 024,88
346a	+56 759,76	+60 016,84
346b	+56 801,06	+59 985,24
346c	+56 798,90	+59 993,38
347a	+56 888,90	+60 040,78
347b	+56 887,86	+60 085,69
347c	+56 927,76	+60 068,00
347d	+56 928,57	+60 043,00
350a	+56 886,58	+60 050,49
350b	+56 924,73	+60 093,78
351a	+56 886,05	+60 104,46
351b	+56 866,24	+60 131,34
351c	+56 923,53	+60 130,68
353a	+56 891,57	+60 162,19
353b	+56 900,42	+60 180,96
353c	+56 934,82	+60 176,39
353d	+56 927,55	+60 153,19



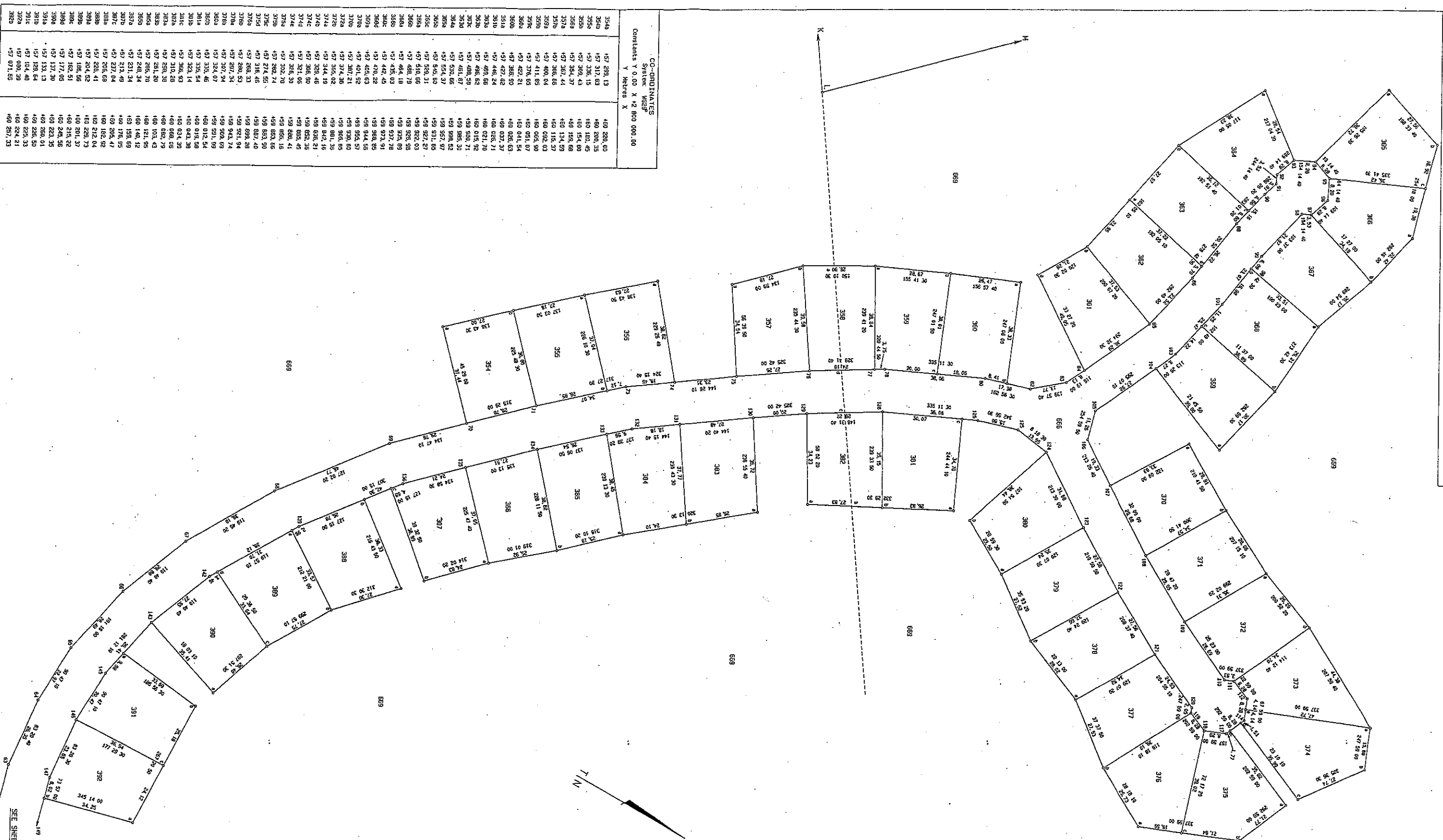
GENERAL PLAN
 OF PORTIONS 338 TO 670
 (PORTIONS OF PORTION 337)
 OF THE FARM
 BOSCHKOP No. 369 - JR

SURVEYED IN SEPTEMBER 2004 TO
 JANUARY 2007 BY ME

 H. D. KALHERBE (PLS 1139)
 PROFESSIONAL LAND SURVEYOR

FILE No. -/52
 SURVEY RECORDS No. 993/2007
 COMPILATION JRSS - 13, 14, 31
 DEEDS: PRETORIA

S.G. No. 2515/2007
SHEET 7 OF 16 SHEETS

APPROVED
M. J. BOSCHKOP
FOR SURVEYOR-GENERAL
03.07.2007



CO-ORDINATES
System: WGS84
Constants Y 0.00 X 42 800 000.00

Parcel No.	X	Y
354	420 200.00	457 289.13
355	480 200.15	457 317.63
356	480 200.45	457 336.15
357	480 154.00	457 309.43
358	480 154.00	457 354.37
359	480 154.00	457 387.44
360	480 114.00	457 386.68
361	480 114.00	457 400.04
362	480 065.90	457 411.95
363	480 065.90	457 422.21
364	480 021.00	457 422.21
365	480 021.00	457 466.24
366	480 021.00	457 486.24
367	480 021.00	457 486.24
368	480 021.00	457 486.24
369	480 021.00	457 486.24
370	480 021.00	457 486.24
371	480 021.00	457 486.24
372	480 021.00	457 486.24
373	480 021.00	457 486.24
374	480 021.00	457 486.24
375	480 021.00	457 486.24
376	480 021.00	457 486.24
377	480 021.00	457 486.24
378	480 021.00	457 486.24
379	480 021.00	457 486.24
380	480 021.00	457 486.24
381	480 021.00	457 486.24
382	480 021.00	457 486.24
383	480 021.00	457 486.24
384	480 021.00	457 486.24
385	480 021.00	457 486.24
386	480 021.00	457 486.24
387	480 021.00	457 486.24
388	480 021.00	457 486.24
389	480 021.00	457 486.24
390	480 021.00	457 486.24
391	480 021.00	457 486.24
392	480 021.00	457 486.24
393	480 021.00	457 486.24
394	480 021.00	457 486.24

GENERAL PLAN
OF PORTIONS 338 TO 370
OF THE FARM
BOSCHKOP No. 388 - JR

SURVEYED IN SEPTEMBER 2004 TO
JANUARY 2007 BY ME

M. O. HALLBERG PLS 1139
PROFESSIONAL LAND SURVEYOR

FILE No. -752
SURVEY RECORDS No. 983/2007
COMPILATION: JSSS - 13, 14, 31
DEEDS: PRETORIA

SEE SHEET 6 INSET 1

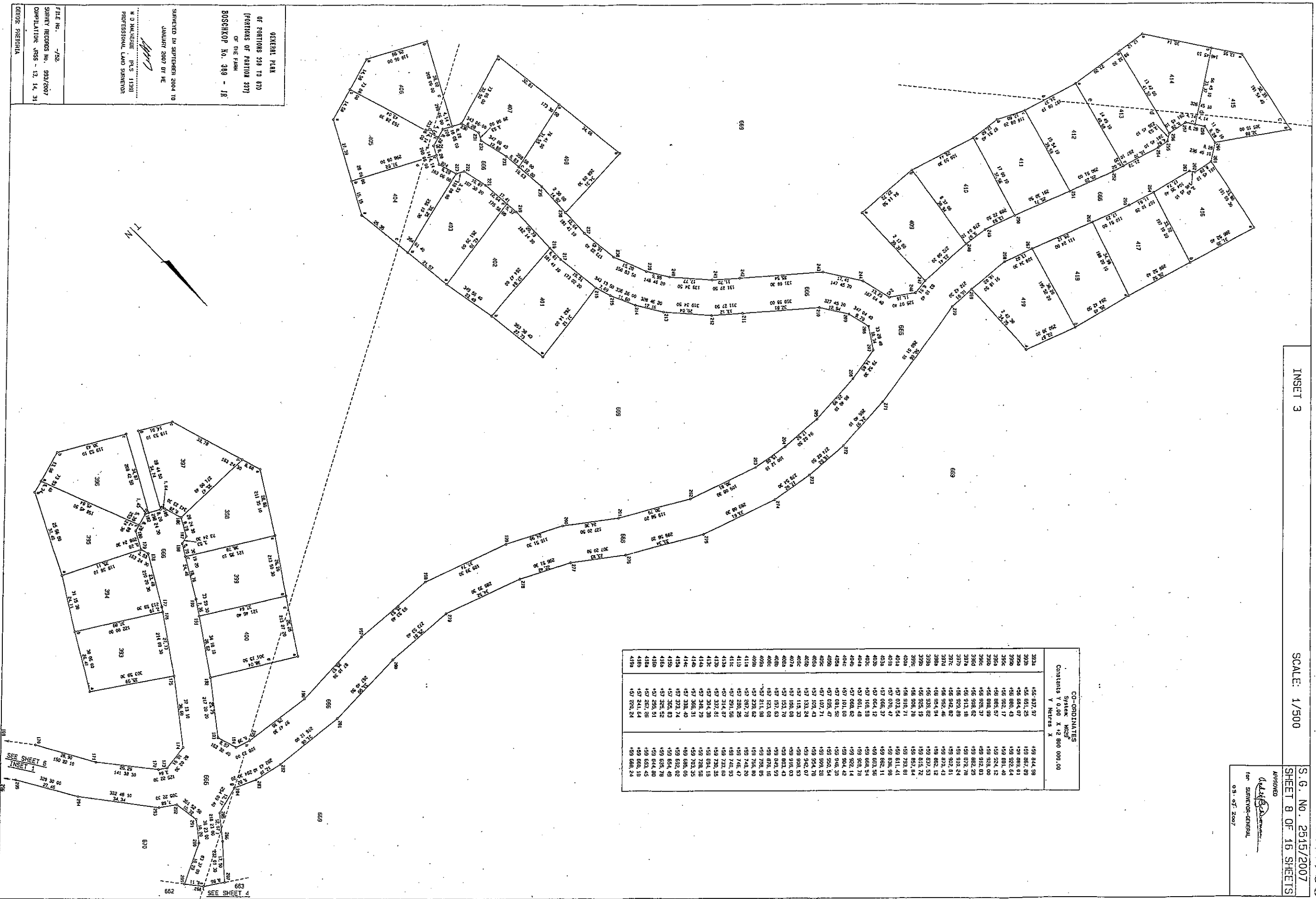
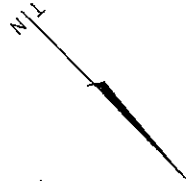
APPROVED
[Signature]
for SURVEYOR-GENERAL
03. OF. 2007

CO-ORDINATES		
Station	Systeam Meters	Constants X 0.00 X 12 800 000.00
	Y	X
	Meters	Meters
383A	455 837.97	459 844.98
383B	455 921.25	459 867.89
383C	456 864.07	459 889.81
383D	456 880.43	459 922.64
383E	456 902.17	459 891.40
383F	456 898.99	459 924.12
383G	456 828.37	459 938.00
383H	456 828.37	459 912.93
383I	456 913.16	459 935.78
383J	456 923.80	459 910.24
383K	456 942.82	459 902.61
383L	456 952.46	459 872.43
383M	456 954.94	459 862.12
383N	456 938.82	459 837.53
383O	456 925.19	459 815.72
383P	456 908.78	459 867.84
383Q	456 918.71	459 793.81
383R	457 073.54	459 811.41
383S	457 070.47	459 838.98
383T	457 065.37	459 862.11
383U	457 064.12	459 882.55
383V	457 102.58	459 888.54
383W	457 081.48	459 902.78
383X	457 068.82	459 922.14
383Y	457 101.80	459 904.42
383Z	457 084.72	459 886.34
384A	457 028.72	459 908.28
384B	457 107.71	459 908.28
384C	457 103.43	459 924.78
384D	457 123.24	459 902.07
384E	457 118.33	459 908.53
384F	457 150.88	459 916.03
384G	457 153.78	459 883.43
384H	457 157.63	459 849.59
384I	457 123.88	459 878.16
384J	457 211.98	459 792.95
384K	457 239.62	459 756.80
384L	457 287.78	459 744.20
384M	457 280.58	459 746.47
384N	457 291.58	459 742.93
384O	457 314.97	459 732.83
384P	457 314.97	459 728.58
384Q	457 304.51	459 728.58
384R	457 348.78	459 728.58
384S	457 368.31	459 703.35
384T	457 388.40	459 688.05
384U	457 373.74	459 682.02
384V	457 365.83	459 654.48
384W	457 325.52	459 658.78
384X	457 287.55	459 644.88
384Y	457 241.64	459 624.45
384Z	457 220.24	459 688.24

GENERAL PLAN
OF PORTIONS 333 TO 370
OF SECTION 23 (233)
OF THE FARM
BOSCHKOP No. 389 - 1H

SURVEYED IN SEPTEMBER 2004 TO
JANUARY 2007 BY ME
[Signature]
N. J. MAURER P.L.S. 11301
PROFESSIONAL LAND SURVEYOR

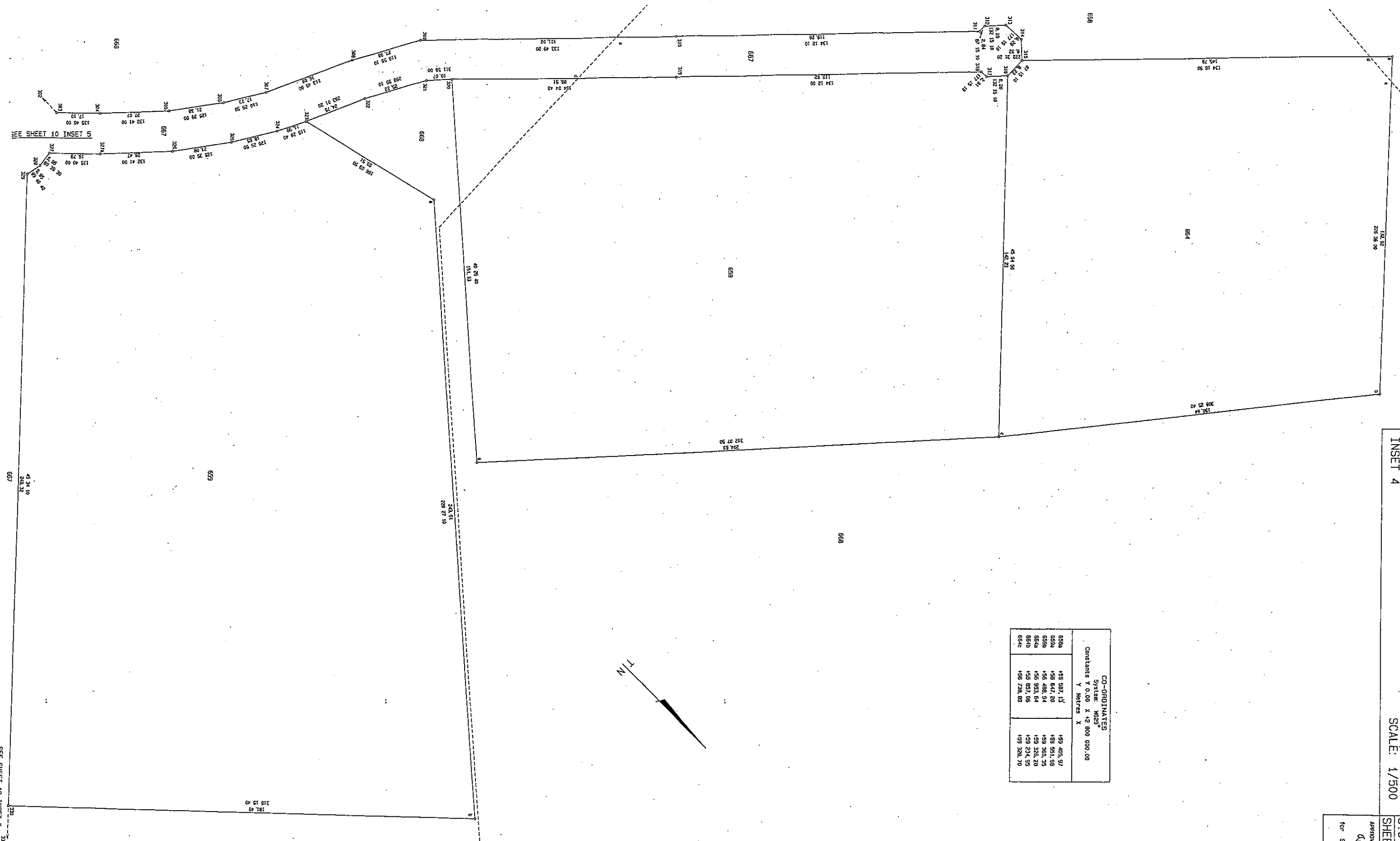
FILE No. -/482
SURVEY RECORDS No. 933/2007
COMPILATION DRS - 12, 14, 31
DEPOS. PRETORIA



SEE SHEET 4
SEE SHEET 1
SEE SHEET 6
INSET 1

APPROVED
[Signature]
for SURVEYOR-GENERAL
03.07.2007

CO-ORDINATES			
System: MGS			
Constants Y 0.00 X 12 000 000.00			
Y	Metres	X	Metres
659a	+58 507, 13	+59 405, 97	
659b	+58 647, 20	+59 551, 95	
659c	+56 486, 34	+59 365, 35	
654b	+56 933, 64	+59 326, 28	
654c	+56 937, 06	+59 234, 95	
654d	+56 736, 69	+59 326, 70	



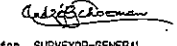
GENERAL PLAN
OF PORTIONS 336 TO 630
(PORTIONS OF PORTION 337)
OF THE FARM
BOSCHKOP No. 388 - 1R

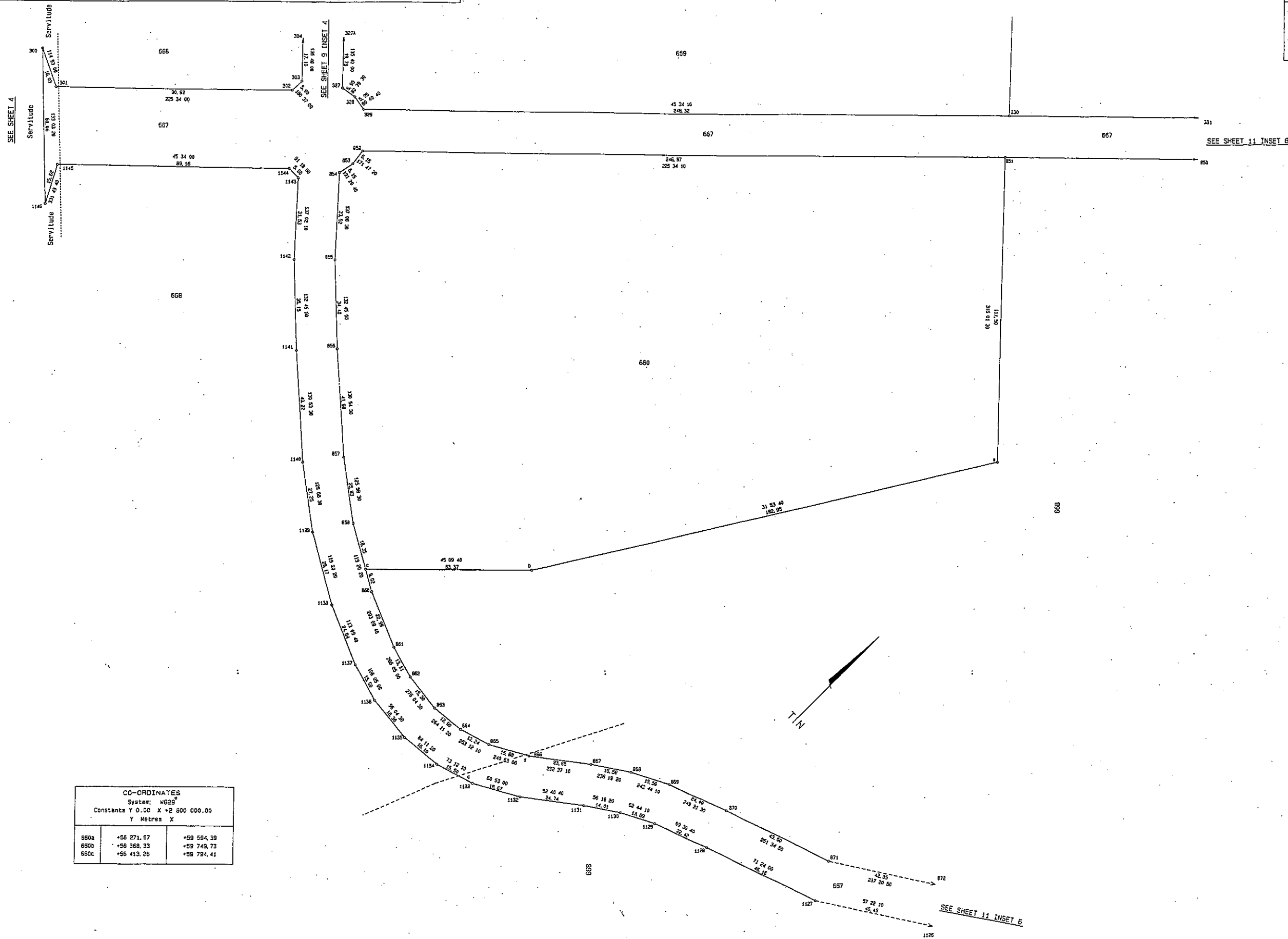
SURVEYED IN SEPTEMBER 2004 TO
JANUARY 2007 BY ME
[Signature]

N D MALHERBE (P.L.S. 1139)
PROFESSIONAL LAND SURVEYOR

FILE No. -/52
SURVEY RECORDS No. 939/2007
COMPILATION, JMS9 - 13, 14, 31

INSET 5 SCALE: 1/500

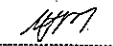
S.G. No. 2515/2007
 SHEET 10 OF 16 SHEETS
 APPROVED

 for SURVEYOR-GENERAL
 03.07.2007



CO-ORDINATES		
System: WGS84		
Constants Y 0.00 X +2 800 000.00		
Y Metres X		
660a	+56 271.67	+59 594.39
660b	+56 368.33	+59 749.73
660c	+56 413.26	+59 794.41

GENERAL PLAN
 OF PORTIONS 338 TO 670
 (PORTIONS OF PORTION 337)
 OF THE FARM
 BOSCHKOP No. 369 - JR

SURVEYED IN SEPTEMBER 2004 TO
 FEBRUARY 2007 BY ME


 M D MALHERBE (PLS 1139)
 PROFESSIONAL LAND SURVEYOR

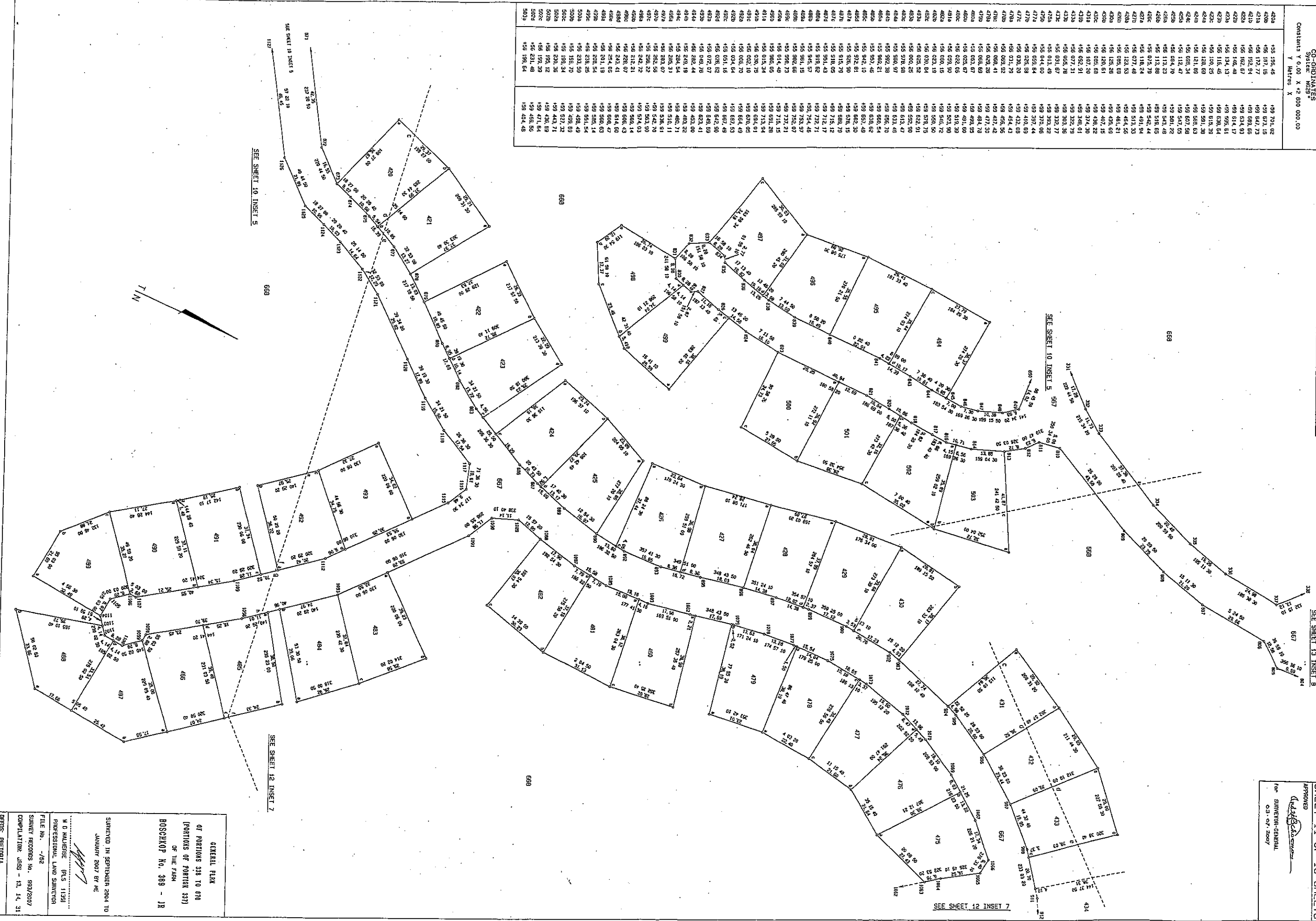
FILE No. -/52
 SURVEY RECORDS No. 993/2007
 COMPILATION JRSS - 13, 14, 31
 DEEDS: PRETORIA

CD-ORINAVTES
System: MDS9
Constants X 0,00 X+2 800 000,00
Y Metres X

S.G. No. 2515/2007
SHEET 11 OF 16 SHEETS

APPROVED
[Signature]
FOR SURVEYOR-GENERAL
03.07.2007

420a	155 156,46	159 701,02
420b	155 157,15	159 673,15
421a	155 172,77	159 647,73
421b	155 152,94	159 693,65
422a	155 162,67	159 624,93
422b	155 146,48	159 614,17
423a	155 174,13	159 595,61
423b	155 116,46	159 638,64
424a	155 120,25	159 615,38
424b	155 128,69	159 591,38
424c	155 121,89	159 568,63
424d	155 691,34	159 607,58
425a	155 112,47	159 547,55
425b	155 884,70	159 561,22
426a	155 113,23	159 543,48
426b	155 972,79	159 519,69
427a	155 972,79	159 542,44
427b	155 118,24	159 491,94
427c	155 972,48	159 513,33
428a	155 124,53	159 484,56
428b	155 972,48	159 481,21
429a	155 128,53	159 462,09
429b	155 128,53	159 462,09
430a	155 128,53	159 462,09
430b	155 128,53	159 462,09
431a	155 662,91	159 328,01
431b	155 662,91	159 328,01
432a	155 662,91	159 328,01
432b	155 662,91	159 328,01
433a	155 662,91	159 328,01
433b	155 662,91	159 328,01
434a	155 662,91	159 328,01
434b	155 662,91	159 328,01
435a	155 662,91	159 328,01
435b	155 662,91	159 328,01
436a	155 662,91	159 328,01
436b	155 662,91	159 328,01
437a	155 662,91	159 328,01
437b	155 662,91	159 328,01
438a	155 662,91	159 328,01
438b	155 662,91	159 328,01
439a	155 662,91	159 328,01
439b	155 662,91	159 328,01
440a	155 662,91	159 328,01
440b	155 662,91	159 328,01
441a	155 662,91	159 328,01
441b	155 662,91	159 328,01
442a	155 662,91	159 328,01
442b	155 662,91	159 328,01
443a	155 662,91	159 328,01
443b	155 662,91	159 328,01
444a	155 662,91	159 328,01
444b	155 662,91	159 328,01
445a	155 662,91	159 328,01
445b	155 662,91	159 328,01
446a	155 662,91	159 328,01
446b	155 662,91	159 328,01
447a	155 662,91	159 328,01
447b	155 662,91	159 328,01
448a	155 662,91	159 328,01
448b	155 662,91	159 328,01
449a	155 662,91	159 328,01
449b	155 662,91	159 328,01
450a	155 662,91	159 328,01
450b	155 662,91	159 328,01
451a	155 662,91	159 328,01
451b	155 662,91	159 328,01
452a	155 662,91	159 328,01
452b	155 662,91	159 328,01
453a	155 662,91	159 328,01
453b	155 662,91	159 328,01
454a	155 662,91	159 328,01
454b	155 662,91	159 328,01
455a	155 662,91	159 328,01
455b	155 662,91	159 328,01
456a	155 662,91	159 328,01
456b	155 662,91	159 328,01
457a	155 662,91	159 328,01
457b	155 662,91	159 328,01
458a	155 662,91	159 328,01
458b	155 662,91	159 328,01
459a	155 662,91	159 328,01
459b	155 662,91	159 328,01
460a	155 662,91	159 328,01
460b	155 662,91	159 328,01
461a	155 662,91	159 328,01
461b	155 662,91	159 328,01
462a	155 662,91	159 328,01
462b	155 662,91	159 328,01
463a	155 662,91	159 328,01
463b	155 662,91	159 328,01
464a	155 662,91	159 328,01
464b	155 662,91	159 328,01
465a	155 662,91	159 328,01
465b	155 662,91	159 328,01
466a	155 662,91	159 328,01
466b	155 662,91	159 328,01
467a	155 662,91	159 328,01
467b	155 662,91	159 328,01
468a	155 662,91	159 328,01
468b	155 662,91	159 328,01
469a	155 662,91	159 328,01
469b	155 662,91	159 328,01
470a	155 662,91	159 328,01
470b	155 662,91	159 328,01
471a	155 662,91	159 328,01
471b	155 662,91	159 328,01
472a	155 662,91	159 328,01
472b	155 662,91	159 328,01
473a	155 662,91	159 328,01
473b	155 662,91	159 328,01
474a	155 662,91	159 328,01
474b	155 662,91	159 328,01
475a	155 662,91	159 328,01
475b	155 662,91	159 328,01
476a	155 662,91	159 328,01
476b	155 662,91	159 328,01
477a	155 662,91	159 328,01
477b	155 662,91	159 328,01
478a	155 662,91	159 328,01
478b	155 662,91	159 328,01
479a	155 662,91	159 328,01
479b	155 662,91	159 328,01
480a	155 662,91	159 328,01
480b	155 662,91	159 328,01
481a	155 662,91	159 328,01
481b	155 662,91	159 328,01
482a	155 662,91	159 328,01
482b	155 662,91	159 328,01
483a	155 662,91	159 328,01
483b	155 662,91	159 328,01
484a	155 662,91	159 328,01
484b	155 662,91	159 328,01
485a	155 662,91	159 328,01
485b	155 662,91	159 328,01
486a	155 662,91	159 328,01
486b	155 662,91	159 328,01
487a	155 662,91	159 328,01
487b	155 662,91	159 328,01
488a	155 662,91	159 328,01
488b	155 662,91	159 328,01
489a	155 662,91	159 328,01
489b	155 662,91	159 328,01
490a	155 662,91	159 328,01
490b	155 662,91	159 328,01
491a	155 662,91	159 328,01
491b	155 662,91	159 328,01
492a	155 662,91	159 328,01
492b	155 662,91	159 328,01
493a	155 662,91	159 328,01
493b	155 662,91	159 328,01
494a	155 662,91	159 328,01
494b	155 662,91	159 328,01
495a	155 662,91	159 328,01
495b	155 662,91	159 328,01
496a	155 662,91	159 328,01
496b	155 662,91	159 328,01
497a	155 662,91	159 328,01
497b	155 662,91	159 328,01
498a	155 662,91	159 328,01
498b	155 662,91	159 328,01
499a	155 662,91	159 328,01
499b	155 662,91	159 328,01
500a	155 662,91	159 328,01
500b	155 662,91	159 328,01
501a	155 662,91	159 328,01
501b	155 662,91	159 328,01
502a	155 662,91	159 328,01
502b	155 662,91	159 328,01
503a	155 662,91	159 328,01
503b	155 662,91	159 328,01
504a	155 662,91	159 328,01
504b	155 662,91	159 328,01
505a	155 662,91	159 328,01
505b	155 662,91	159 328,01
506a	155 662,91	159 328,01
506b	155 662,91	159 328,01
507a	155 662,91	159 328,01
507b	155 662,91	159 328,01
508a	155 662,91	159 328,01
508b	155 662,91	159 328,01
509a	155 662,91	159 328,01
509b	155 662,91	159 328,01
510a	155 662,91	159 328,01
510b	155 662,91	159 328,01



GENERAL PLAN
OF PORTIONS 338 TO 870
(PORTIONS OF PORTION 337)
OF THE FARM
BOSCHKOP No. 389 - JR

SURVEYED IN SEPTEMBER 2004 TO
JANUARY 2007 BY ME

H. D. MAUJERIE (S 1139)
PROFESSIONAL LAND SURVEYOR

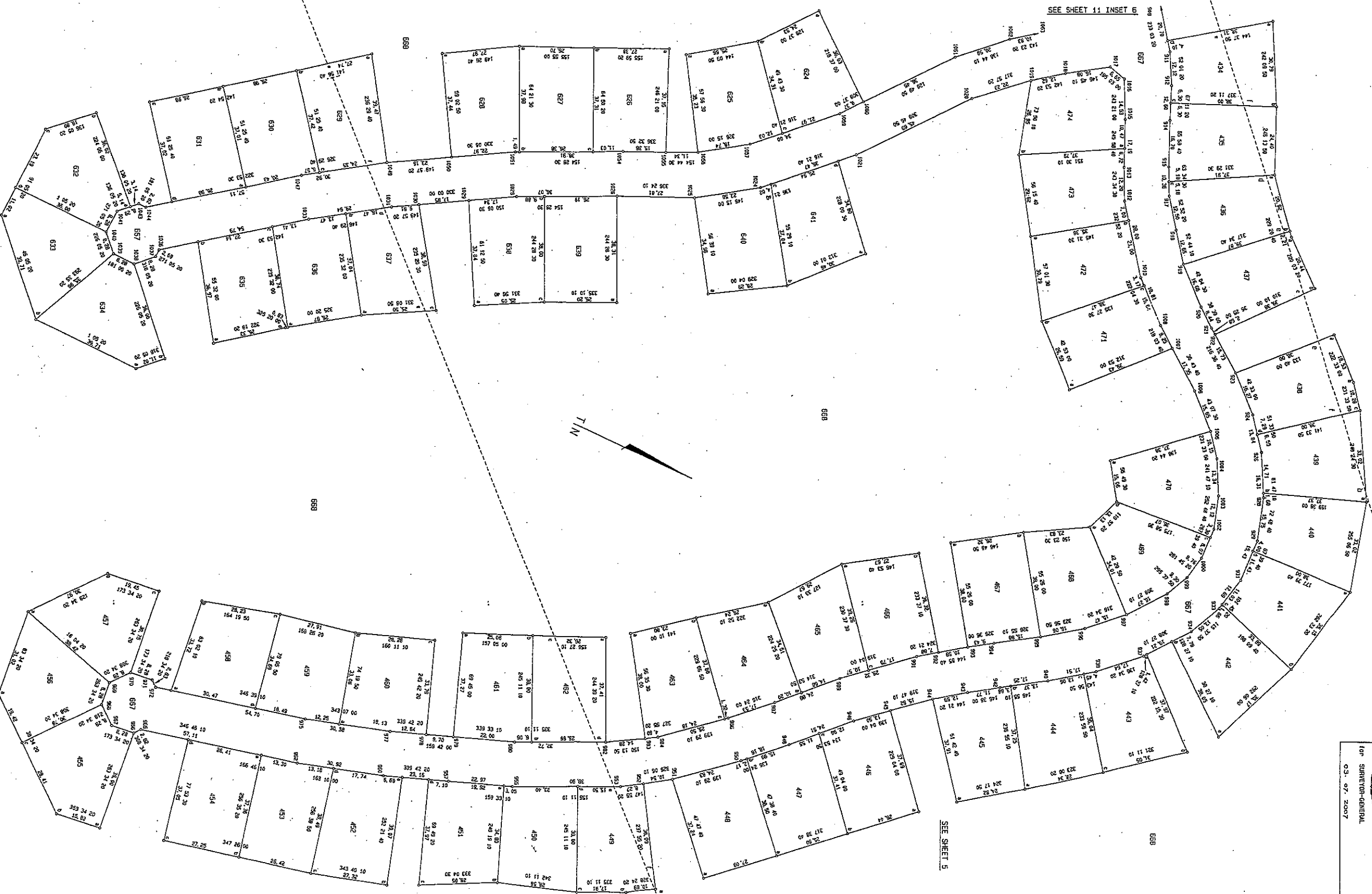
FILE No. -782

SURVEY RECORDS No. 993/2007
COMPLIATION JRS - 13, 14, 31

DEEDS: PRETORIA

CO-ORDINATES
System: WGS84
Constants Y 0.00 X Y2 800 000.00
Y Metres X

434a	499 220.58
434b	499 219.20
434c	499 218.22
434d	499 217.24
434e	499 216.26
434f	499 215.28
434g	499 214.30
434h	499 213.32
434i	499 212.34
434j	499 211.36
434k	499 210.38
434l	499 209.40
434m	499 208.42
434n	499 207.44
434o	499 206.46
434p	499 205.48
434q	499 204.50
434r	499 203.52
434s	499 202.54
434t	499 201.56
434u	499 200.58
434v	499 199.60
434w	499 198.62
434x	499 197.64
434y	499 196.66
434z	499 195.68
435a	499 194.70
435b	499 193.72
435c	499 192.74
435d	499 191.76
435e	499 190.78
435f	499 189.80
435g	499 188.82
435h	499 187.84
435i	499 186.86
435j	499 185.88
435k	499 184.90
435l	499 183.92
435m	499 182.94
435n	499 181.96
435o	499 180.98
435p	499 179.00
435q	499 178.02
435r	499 177.04
435s	499 176.06
435t	499 175.08
435u	499 174.10
435v	499 173.12
435w	499 172.14
435x	499 171.16
435y	499 170.18
435z	499 169.20
436a	499 168.22
436b	499 167.24
436c	499 166.26
436d	499 165.28
436e	499 164.30
436f	499 163.32
436g	499 162.34
436h	499 161.36
436i	499 160.38
436j	499 159.40
436k	499 158.42
436l	499 157.44
436m	499 156.46
436n	499 155.48
436o	499 154.50
436p	499 153.52
436q	499 152.54
436r	499 151.56
436s	499 150.58
436t	499 149.60
436u	499 148.62
436v	499 147.64
436w	499 146.66
436x	499 145.68
436y	499 144.70
436z	499 143.72
437a	499 142.74
437b	499 141.76
437c	499 140.78
437d	499 139.80
437e	499 138.82
437f	499 137.84
437g	499 136.86
437h	499 135.88
437i	499 134.90
437j	499 133.92
437k	499 132.94
437l	499 131.96
437m	499 130.98
437n	499 129.00
437o	499 128.02
437p	499 127.04
437q	499 126.06
437r	499 125.08
437s	499 124.10
437t	499 123.12
437u	499 122.14
437v	499 121.16
437w	499 120.18
437x	499 119.20
437y	499 118.22
437z	499 117.24
438a	499 116.26
438b	499 115.28
438c	499 114.30
438d	499 113.32
438e	499 112.34
438f	499 111.36
438g	499 110.38
438h	499 109.40
438i	499 108.42
438j	499 107.44
438k	499 106.46
438l	499 105.48
438m	499 104.50
438n	499 103.52
438o	499 102.54
438p	499 101.56
438q	499 100.58
438r	499 99.60
438s	499 98.62
438t	499 97.64
438u	499 96.66
438v	499 95.68
438w	499 94.70
438x	499 93.72
438y	499 92.74
438z	499 91.76
439a	499 90.78
439b	499 89.80
439c	499 88.82
439d	499 87.84
439e	499 86.86
439f	499 85.88
439g	499 84.90
439h	499 83.92
439i	499 82.94
439j	499 81.96
439k	499 80.98
439l	499 79.00
439m	499 78.02
439n	499 77.04
439o	499 76.06
439p	499 75.08
439q	499 74.10
439r	499 73.12
439s	499 72.14
439t	499 71.16
439u	499 70.18
439v	499 69.20
439w	499 68.22
439x	499 67.24
439y	499 66.26
439z	499 65.28
440a	499 64.30
440b	499 63.32
440c	499 62.34
440d	499 61.36
440e	499 60.38
440f	499 59.40
440g	499 58.42
440h	499 57.44
440i	499 56.46
440j	499 55.48
440k	499 54.50
440l	499 53.52
440m	499 52.54
440n	499 51.56
440o	499 50.58
440p	499 49.60
440q	499 48.62
440r	499 47.64
440s	499 46.66
440t	499 45.68
440u	499 44.70
440v	499 43.72
440w	499 42.74
440x	499 41.76
440y	499 40.78
440z	499 39.80
441a	499 38.82
441b	499 37.84
441c	499 36.86
441d	499 35.88
441e	499 34.90
441f	499 33.92
441g	499 32.94
441h	499 31.96
441i	499 30.98
441j	499 29.00
441k	499 28.02
441l	499 27.04
441m	499 26.06
441n	499 25.08
441o	499 24.10
441p	499 23.12
441q	499 22.14
441r	499 21.16
441s	499 20.18
441t	499 19.20
441u	499 18.22
441v	499 17.24
441w	499 16.26
441x	499 15.28
441y	499 14.30
441z	499 13.32
442a	499 12.34
442b	499 11.36
442c	499 10.38
442d	499 9.40
442e	499 8.42
442f	499 7.44
442g	499 6.46
442h	499 5.48
442i	499 4.50
442j	499 3.52
442k	499 2.54
442l	499 1.56
442m	499 0.58
442n	499 0.00
442o	499 0.00
442p	499 0.00
442q	499 0.00
442r	499 0.00
442s	499 0.00
442t	499 0.00
442u	499 0.00
442v	499 0.00
442w	499 0.00
442x	499 0.00
442y	499 0.00
442z	499 0.00



GENERAL PLAN
OF PORTIONS 316 TO 970
OF THE FARM
BOSCHKOP No. 389 - JH

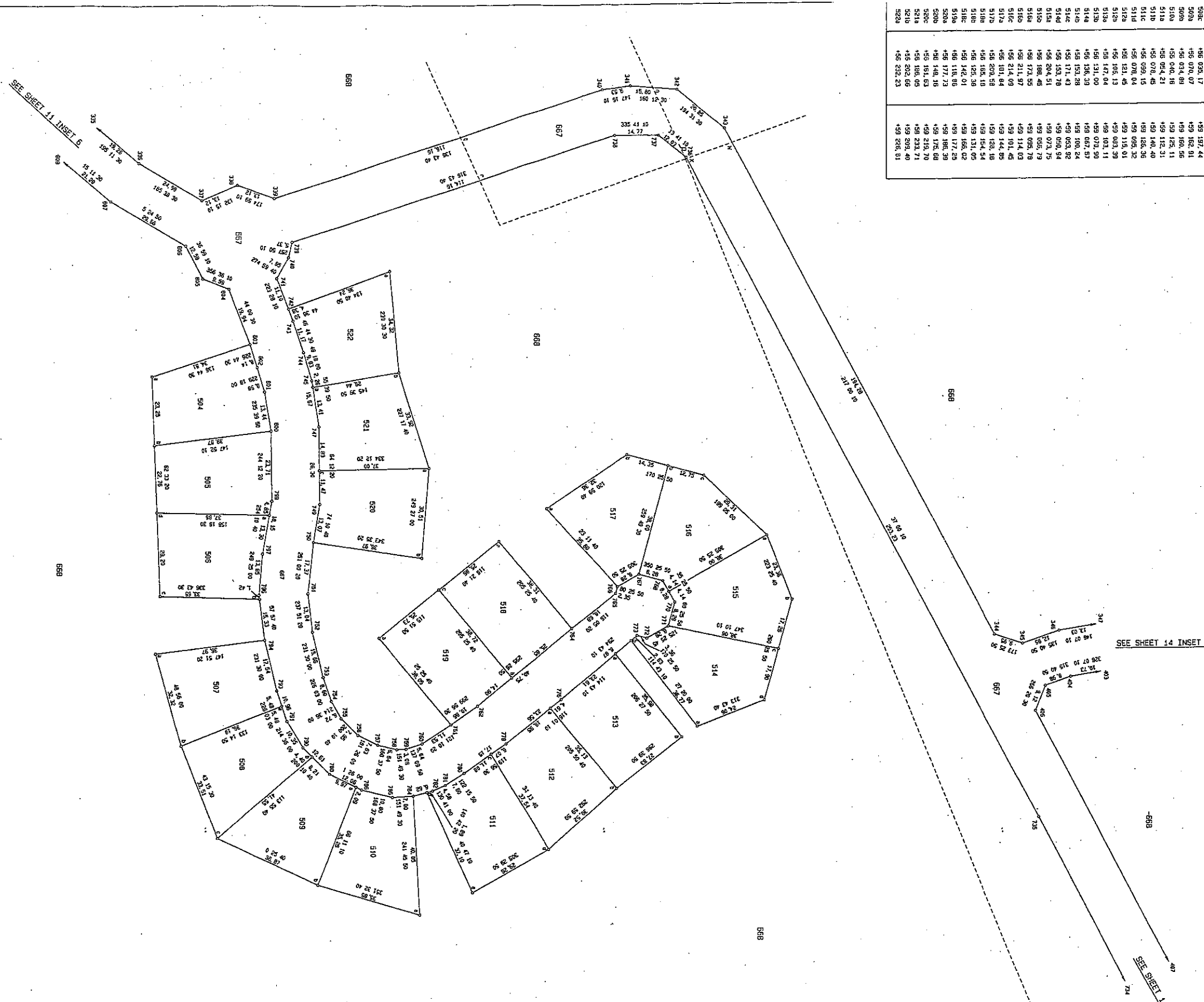
SURVEYED IN SEPTEMBER 2004 TO
JANUARY 2007 BY ME

M. D. MALMERIE (P.L.S. 1139)
PROFESSIONAL LAND SURVEYOR

FILE NO. -/52
SURVEY RECORDS No. 993/2007
COMPILATION JMS - 13. 14. 31
DEODOR PRETORIA

CO-ORDINATES
System: MGS2
Constants Y 0.00 X +2.000 000.00
Y Metres X

504a	456 156.43	459 284.25
504b	456 145.89	459 273.54
505a	456 140.92	459 259.39
505b	456 113.96	459 219.15
506a	456 100.66	459 250.05
506b	456 125.66	459 253.05
507a	456 082.50	459 243.07
507b	456 092.13	459 221.84
508a	456 084.49	459 151.04
508b	456 073.15	459 180.59
509a	456 025.17	459 197.44
509b	456 070.07	459 162.91
510a	456 034.86	459 160.56
510b	456 040.16	459 125.11
511a	456 024.21	459 140.40
511b	456 078.48	459 112.31
511c	456 039.16	459 126.36
512a	456 070.04	459 095.32
512b	456 131.48	459 115.01
513a	456 106.13	459 083.39
513b	456 147.04	459 103.11
514a	456 131.00	459 070.90
514b	456 136.33	459 067.87
514c	456 151.28	459 100.24
514d	456 171.43	459 083.92
515a	456 153.78	459 050.94
515b	456 204.51	459 073.75
515c	456 188.48	459 055.79
516a	456 173.59	459 095.78
516b	456 211.97	459 114.03
516c	456 214.09	459 101.48
517a	456 101.84	459 144.85
517b	456 203.58	459 128.18
518a	456 152.18	459 154.54
518b	456 125.38	459 131.05
518c	456 142.01	459 166.02
519a	456 118.86	459 177.29
520a	456 177.73	459 186.39
520b	456 148.18	459 175.88
520c	456 161.63	459 215.70
521a	456 186.05	459 233.71
521b	456 202.66	459 209.40
522a	456 232.23	459 226.81



S.G. No. 2515/2007
SHEET 13 OF 16 SHEETS
APPROVED
[Signature]
FOR SURVEYOR-GENERAL
03-07-2007


GENERAL PLAN
OF PORTIONS 336 TO 870
(PORTIONS OF PORTION 371)
OF THE FARM
BOSCHKOP No. 389 - JR
SURVEYED IN SEPTEMBER 2004 TO
JANUARY 2007 BY ME
[Signature]
H. D. MALHERBE (O.S. 1139)
PROFESSIONAL LAND SURVEYOR
FILE No. -/52
SURVEY RECORDS No. 983/2007
COMPILATION JMS - 13, 14, 31
DEBS: PRETORIA

INSET 9

SCALE: 1/500

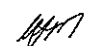
S.G. No. 2515/2007

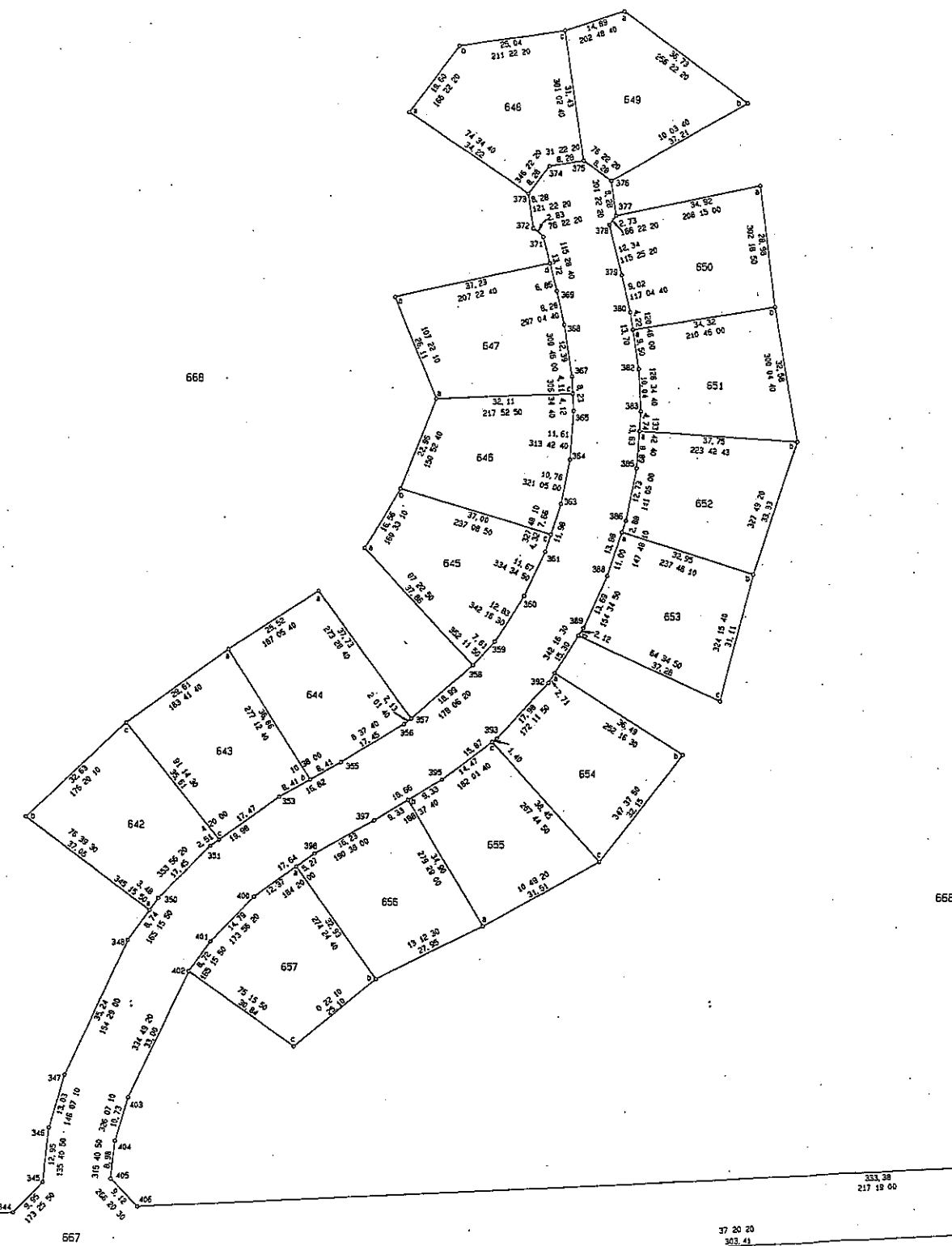
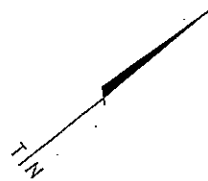
SHEET 14 OF 16 SHEETS

APPROVED

 for SURVEYOR-GENERAL
 08.07.2007

GENERAL PLAN
 OF PORTIONS 338 TO 876
 (PORTIONS OF PORTION 337)
 OF THE FARM
 BOSCHKOP No. 368 - JR

SURVEYED IN SEPTEMBER 2004 TO
 JANUARY 2007 BY ME


 W O MALHERBE (PLS 1129)
 PROFESSIONAL LAND SURVEYOR



CO-ORDINATES		
System: MGS		
Constants Y 0.00 X +2 800 000.00		
	Y Metres	X
642a	+56 240.99	+56 919.54
642b	+56 277.04	+56 928.09
642c	+56 279.13	+56 885.53
643a	+56 277.22	+56 865.98
643b	+56 240.65	+56 870.61
643c	+56 243.53	+56 895.31
644a	+56 274.07	+56 940.66
645a	+56 274.85	+56 825.71
645b	+56 280.37	+56 810.09
645c	+56 249.29	+56 790.01
647a	+56 291.54	+56 790.03
647b	+56 315.47	+56 782.23
647c	+56 271.83	+56 764.68
647d	+56 259.35	+56 749.17
648a	+56 348.34	+56 751.57
648b	+56 352.96	+56 732.63
648c	+56 339.92	+56 711.25
649a	+56 334.15	+56 697.52
649b	+56 298.45	+56 688.86
650a	+56 281.35	+56 699.05
651a	+56 274.41	+56 744.04
651b	+56 258.06	+56 714.55
652a	+56 254.76	+56 758.16
652b	+56 228.67	+56 730.87
653a	+56 238.80	+56 776.64
653b	+56 210.92	+56 759.09
653c	+56 192.74	+56 784.34
653d	+56 226.42	+56 800.34
654a	+56 223.23	+56 810.31
654b	+56 188.47	+56 799.15
654c	+56 181.58	+56 830.60
655a	+56 187.50	+56 861.54
655b	+56 221.92	+56 855.79
655c	+56 220.01	+56 832.11
657a	+56 226.72	+56 886.23
657b	+56 193.89	+56 888.75
657c	+56 194.05	+56 913.85

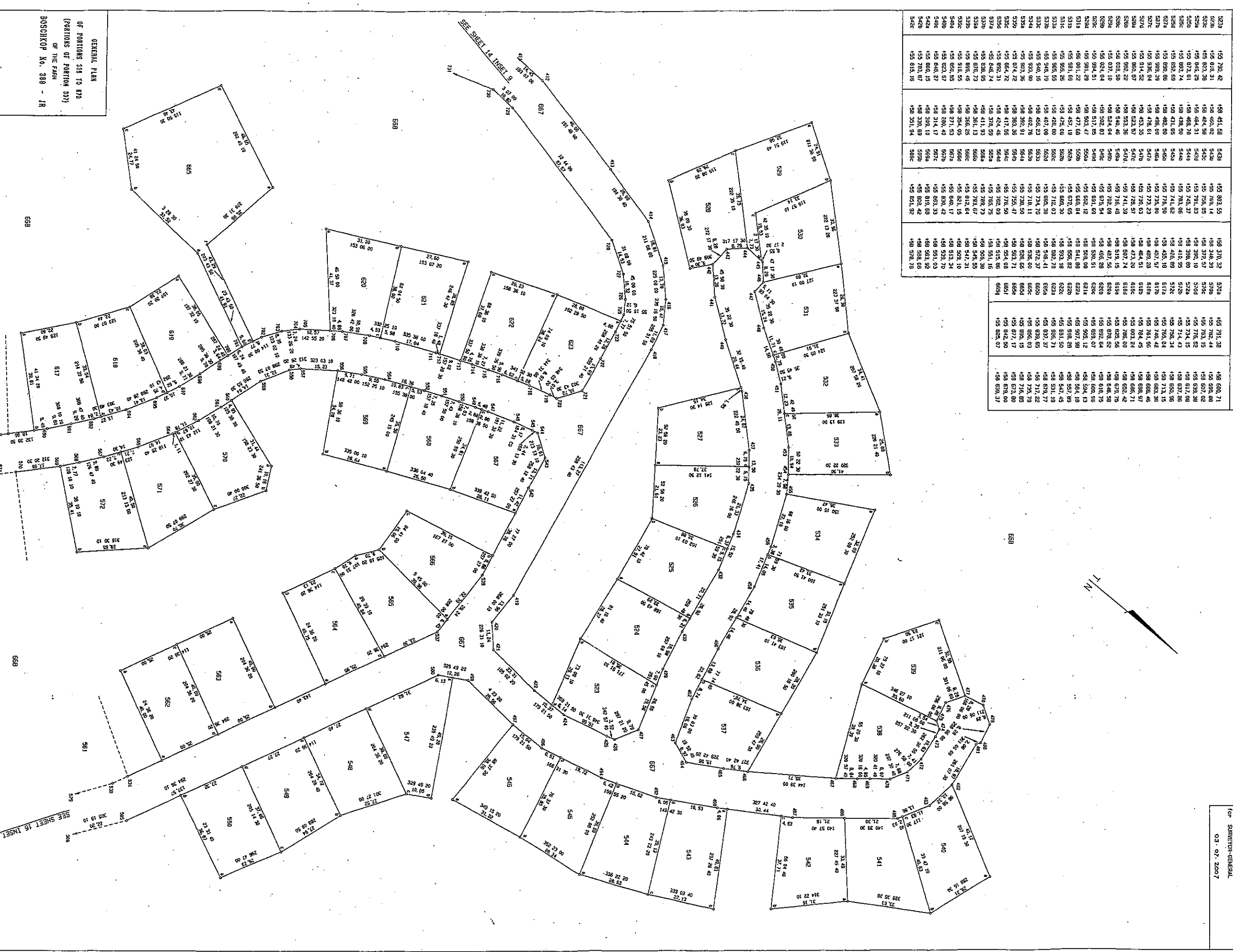
SEE SHEET 13 INSET B
 37 00 10
 253.23

FILE NO. -/52
 SURVEY RECORDS No. 893/2007
 COMPILATION: JRS - 13, 14, 31
 DEEDS: PRETORIA

SEE SHEET 15 INSET 10

CO-ORDINATES
System: NAD83
Constants Y 0.00 X 2 000 000.00
Y metres X

523A	149 370.32	149 451.89
523B	149 370.32	149 451.89
523C	149 370.32	149 451.89
523D	149 370.32	149 451.89
523E	149 370.32	149 451.89
523F	149 370.32	149 451.89
523G	149 370.32	149 451.89
523H	149 370.32	149 451.89
523I	149 370.32	149 451.89
523J	149 370.32	149 451.89
523K	149 370.32	149 451.89
523L	149 370.32	149 451.89
523M	149 370.32	149 451.89
523N	149 370.32	149 451.89
523O	149 370.32	149 451.89
523P	149 370.32	149 451.89
523Q	149 370.32	149 451.89
523R	149 370.32	149 451.89
523S	149 370.32	149 451.89
523T	149 370.32	149 451.89
523U	149 370.32	149 451.89
523V	149 370.32	149 451.89
523W	149 370.32	149 451.89
523X	149 370.32	149 451.89
523Y	149 370.32	149 451.89
523Z	149 370.32	149 451.89



GENERAL PLAN
OF PORTIONS 314 TO 870
OF THE FARM
BOSCHKOP No. 388 - JR

SURVEYED IN SEPTEMBER 2004 TO
JANUARY 2007 BY ME
K O MALHERBE (P/S. 1139)
PROFESSIONAL LAND SURVEYOR

REGISTRATION COPY
S.O. No. 2515/2007
SHEET 15 OF 16 SHEETS

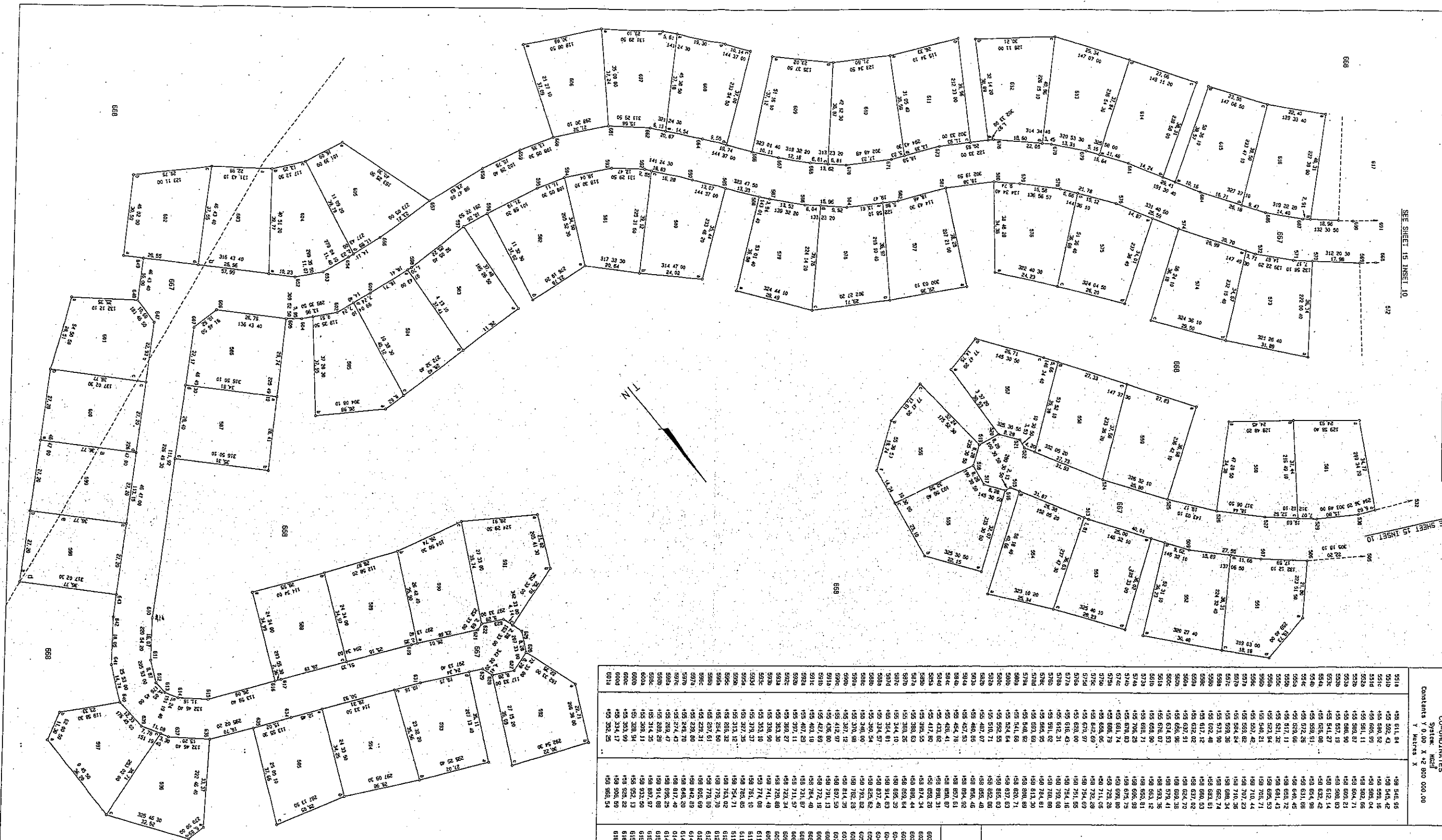
APPROVED
for SURVEY-GENERAL
03. 07. 2007

FILE NO. -752
SURVEY RECORDS No. 593/2007
COMPILATION: JSSS - 13, 14, 31
DEEDS: PELOTONIA

APPROVED
for SURVEYOR-GENERAL
03.07.2007

CO-ORDINATES		System: MGS2	
Contents Y 0.00 X 2 800 000.00		Contents Y 0.00 X 2 800 000.00	
Y	X	Y	X
5910	495 811.84	5910	495 846.56
5911	495 805.43	5911	495 805.43
5912	495 800.52	5912	495 800.52
5913	495 805.99	5913	495 805.99
5914	495 801.11	5914	495 801.11
5915	495 806.87	5915	495 806.87
5916	495 808.90	5916	495 808.90
5917	495 807.19	5917	495 807.19
5918	495 811.27	5918	495 811.27
5919	495 825.08	5919	495 825.08
5920	495 858.51	5920	495 858.51
5921	495 872.25	5921	495 872.25
5922	495 828.66	5922	495 828.66
5923	495 817.11	5923	495 817.11
5924	495 821.32	5924	495 821.32
5925	495 823.94	5925	495 823.94
5926	495 821.42	5926	495 821.42
5927	495 814.21	5927	495 814.21
5928	495 804.84	5928	495 804.84
5929	495 804.24	5929	495 804.24
5930	495 804.84	5930	495 804.84
5931	495 804.24	5931	495 804.24
5932	495 804.84	5932	495 804.84
5933	495 804.24	5933	495 804.24
5934	495 804.84	5934	495 804.84
5935	495 804.24	5935	495 804.24
5936	495 804.84	5936	495 804.84
5937	495 804.24	5937	495 804.24
5938	495 804.84	5938	495 804.84
5939	495 804.24	5939	495 804.24
5940	495 804.84	5940	495 804.84
5941	495 804.24	5941	495 804.24
5942	495 804.84	5942	495 804.84
5943	495 804.24	5943	495 804.24
5944	495 804.84	5944	495 804.84
5945	495 804.24	5945	495 804.24
5946	495 804.84	5946	495 804.84
5947	495 804.24	5947	495 804.24
5948	495 804.84	5948	495 804.84
5949	495 804.24	5949	495 804.24
5950	495 804.84	5950	495 804.84
5951	495 804.24	5951	495 804.24
5952	495 804.84	5952	495 804.84
5953	495 804.24	5953	495 804.24
5954	495 804.84	5954	495 804.84
5955	495 804.24	5955	495 804.24
5956	495 804.84	5956	495 804.84
5957	495 804.24	5957	495 804.24
5958	495 804.84	5958	495 804.84
5959	495 804.24	5959	495 804.24
5960	495 804.84	5960	495 804.84
5961	495 804.24	5961	495 804.24
5962	495 804.84	5962	495 804.84
5963	495 804.24	5963	495 804.24
5964	495 804.84	5964	495 804.84
5965	495 804.24	5965	495 804.24
5966	495 804.84	5966	495 804.84
5967	495 804.24	5967	495 804.24
5968	495 804.84	5968	495 804.84
5969	495 804.24	5969	495 804.24
5970	495 804.84	5970	495 804.84
5971	495 804.24	5971	495 804.24
5972	495 804.84	5972	495 804.84
5973	495 804.24	5973	495 804.24
5974	495 804.84	5974	495 804.84
5975	495 804.24	5975	495 804.24
5976	495 804.84	5976	495 804.84
5977	495 804.24	5977	495 804.24
5978	495 804.84	5978	495 804.84
5979	495 804.24	5979	495 804.24
5980	495 804.84	5980	495 804.84
5981	495 804.24	5981	495 804.24
5982	495 804.84	5982	495 804.84
5983	495 804.24	5983	495 804.24
5984	495 804.84	5984	495 804.84
5985	495 804.24	5985	495 804.24
5986	495 804.84	5986	495 804.84
5987	495 804.24	5987	495 804.24
5988	495 804.84	5988	495 804.84
5989	495 804.24	5989	495 804.24
5990	495 804.84	5990	495 804.84
5991	495 804.24	5991	495 804.24
5992	495 804.84	5992	495 804.84
5993	495 804.24	5993	495 804.24
5994	495 804.84	5994	495 804.84
5995	495 804.24	5995	495 804.24
5996	495 804.84	5996	495 804.84
5997	495 804.24	5997	495 804.24
5998	495 804.84	5998	495 804.84
5999	495 804.24	5999	495 804.24
6000	495 804.84	6000	495 804.84
6001	495 804.24	6001	495 804.24
6002	495 804.84	6002	495 804.84
6003	495 804.24	6003	495 804.24
6004	495 804.84	6004	495 804.84
6005	495 804.24	6005	495 804.24
6006	495 804.84	6006	495 804.84
6007	495 804.24	6007	495 804.24
6008	495 804.84	6008	495 804.84
6009	495 804.24	6009	495 804.24
6010	495 804.84	6010	495 804.84

CO-ORDINATES		System: MGS2	
Contents Y 0.00 X 2 800 000.00		Contents Y 0.00 X 2 800 000.00	
Y	X	Y	X
6020	495 377.36	6020	495 968.13
6021	495 399.36	6021	495 909.37
6022	495 424.27	6022	495 973.09
6023	495 395.93	6023	495 927.71
6024	495 415.41	6024	495 957.73
6025	495 441.43	6025	495 991.73
6026	495 514.63	6026	495 927.41
6027	495 527.62	6027	495 912.70
6028	495 482.92	6028	495 908.49
6029	495 464.97	6029	495 918.59
6030	495 472.19	6030	495 903.69
6031	495 427.69	6031	495 884.20
6032	495 407.28	6032	495 873.30
6033	495 397.11	6033	495 854.15
6034	495 386.27	6034	495 835.54
6035	495 383.30	6035	495 814.63
6036	495 388.99	6036	495 827.48
6037	495 353.16	6037	495 823.62
6038	495 374.48	6038	495 793.62
6039	495 374.48	6039	495 782.59
6040	495 372.32	6040	495 762.33
6041	495 372.32	6041	495 741.13
6042	495 376.32	6042	495 721.19
6043	495 376.32	6043	495 701.19
6044	495 376.32	6044	495 681.19
6045	495 376.32	6045	495 661.19
6046	495 376.32	6046	495 641.19
6047	495 376.32	6047	495 621.19
6048	495 376.32	6048	495 601.19
6049	495 376.32	6049	495 581.19
6050	495 376.32	6050	495 561.19
6051	495 376.32	6051	495 541.19
6052	495 376.32	6052	495 521.19
6053	495 376.32	6053	495 501.19
6054	495 376.32	6054	495 481.19
6055	495 376.32	6055	495 461.19
6056	495 376.32	6056	495 441.19
6057	495 376.32	6057	495 421.19
6058	495 376.32	6058	495 401.19
6059	495 376.32	6059	495 381.19
6060	495 376.32	6060	495 361.19
6061	495 376.32	6061	495 341.19
6062	495 376.32	6062	495 321.19
6063	495 376.32	6063	495 301.19
6064	495 376.32	6064	495 281.19
6065	495 376.32	6065	495 261.19
6066	495 376.32	6066	495 241.19
6067	495 376.32	6067	495 221.19
6068	495 376.32	6068	495 201.19
6069	495 376.32	6069	495 181.19
6070	495 376.32	6070	495 161.19



GENERAL PLAN
OF PORTIONS 334 TO 870
(PORTIONS OF POSITION 337)
OF THE FARM
BOSCHOP No. 388 - JR

SURVEYED IN SEPTEMBER 2004 TO
JANUARY 2007 BY ME

V O MALVERNIE (P.L.S. 1139),
PROFESSIONAL LAND SURVEYOR

FILE No. -782
SURVEY RECORDS No. 953/2007
COMPILATION JSSS - 13, 14, 31

DEEDS PRETORIA